



Miller Log Park Cabins

Anthony PowerLog Park Models engineered for years of worry-free recreational use.



Anthony PowerLog Park Kabin Kottage

Miller Log Supply is pleased to offer a recreational park model log cabin constructed with Anthony PowerLogs™ and beams. The Log Kabin Kottage series are constructed to ensure the highest standard of quality in a weatherproof, enclosed facility under the strict guidelines of RPTIA. RPTIA (Recreational Park Trailer Industry Association) sets standards to assure construction requirements via third party inspection and certification.



Log Kabin Kottage features a modern kitchen

The Log Kabin Kottage features a bedroom with sleeping for four persons, full bath, modern kitchen, living room with additional sleeping area and covered deck. The walls are constructed using Anthony 6"X 8" solid PowerLog, D shape. The ceiling system features Anthony laminated beams with tongue and grooved southern yellow pine sheathing.



Cozy bedroom provides privacy

With the same benefits inherent with our site built log homes, the laminated log offers fewer splits, checks, twists, and warps with virtually no shrinkage. Kabin Kottage log homes are both easy to live in and maintain.

Anthony PowerLog Park Cabins are available in various options, floor plans and upgrades.

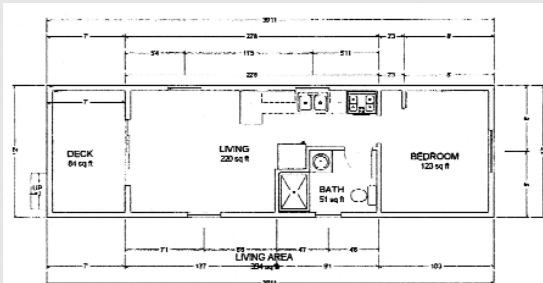
To learn more about these Kabin Kottages contact

Miller Log Supply

303 Ross Avenue Schofield, WI

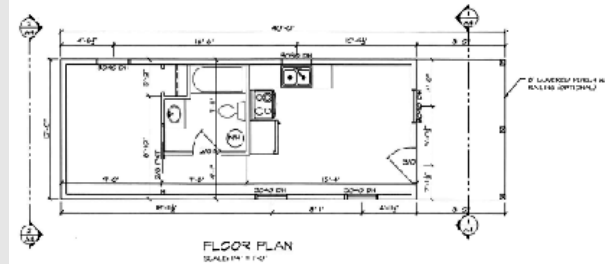
800- 230-7999

www.millerindsupply.com



Arkansas Model with Galley Kitchen and Sliding Glass Patio Door
\$43,000

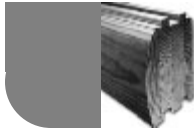
Base price does not include taxes and shipping.



Carolina Model with L-Style Kitchen
\$41,500

Base price does not include taxes and shipping.





PowerLog Park Kabin Kottage log raising in a modern weather proof manufacturing facility.

Cabin uses:

- Guest House
- Lake Home
- Hunting/Fishing Cabin
- Income Property
- Retirement Living
- Student Housing
- Vacation Home



Recreational Park
Trailer Industry
Association

Standard Features Included in the Base Price are:

- Engineers 10" I Beam Trailer with Detachable Hitch
- 2x6 Floor Joist
- 5-1/2" Styrofoam Insulation (r25) Roof and Floor
- 6x8 D Laminate Logs
- 2x4 Interior Framing
- 1x8 V Groove Interior Pine Paneling
- 2x8 V Groove Roof Decking
- Exposed Laminate Rafters and Beams
- Vinyl Insulated Windows
- 1/2" OSB Roof Sheeting
- 29 Gauge Metal Roof
- Double Stainless Steel Kitchen Sink
- Solid Wood Frame, Raised Panel Doors Kitchen Cabinets
- 6 Panel Solid Pine Interior Doors
- Steel Entry Doors
- Fans in Living Room and Bedroom
- 36" Fiberglass Shower
- 20 Gallon Electric Water Heater
- 50 Amp Service
- 14 Cubic Foot Refrigerator
- 30" Gas Range
- Microwave
- Freeze Resistant Pex Water Lines
- Clear Sealant On Interior Walls
- Protective Stain On Exterior Walls
- Electric Baseboard Heat

Systems

- Electrical – 50 AMP panel. GFI outlets in bath, kitchen, and porch. Ceiling fans in living room and bedroom. Two smoke detectors, exterior light at front door, residential switches and receptacles.
- Plumbing – Freeze resistant pex water lines with PVC drain lines discharging at single drop Water Heater – Whirlpool 20 gallon electric water heater.

Standard Options for Base Cabins

4000 BTU Gas Fireplace/Heater	\$1,800	AC Pre Work	\$210
8000 BTU AC Wall Unit.	\$665	LP Gas on Demand Water Heater . .	\$1,120
12000 BTU AC Wall Unit.	\$550	40-Gallon LP Gas Water Heater	\$630
40-Gallon Electric Water Heater		100 Amp Service.	\$210
(+220 upgrade)	\$560	Pre-wire Wall Jacks/Outlet each	\$49
Washer/Dryer Hookups Prep Work.	\$280	Pocket Doors	\$105
Additional Windows.	\$280	6-foot Sliding Patio Door.	\$840
15 Lite Exterior Door.	\$420	Folding Bed.	\$210
Standing Seam Metal Roof	\$1,680	Ceiling Storage Above Bathroom. . .	\$1,064
Shower Door - Glass.	\$182		

Prices subject to change.